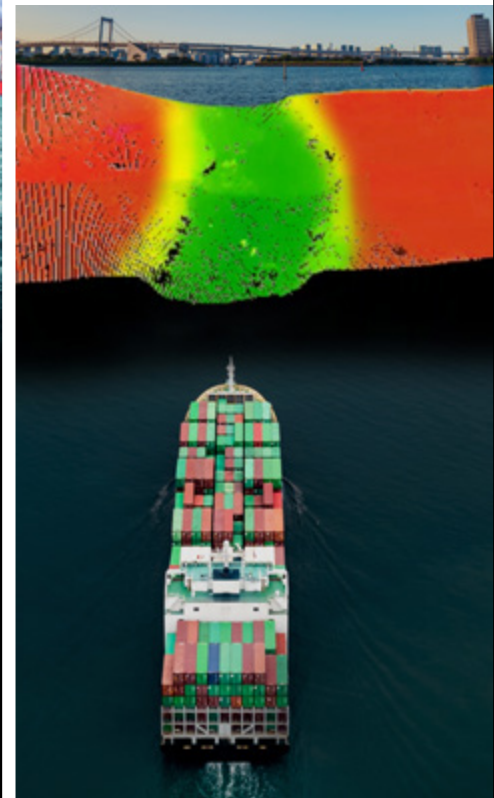
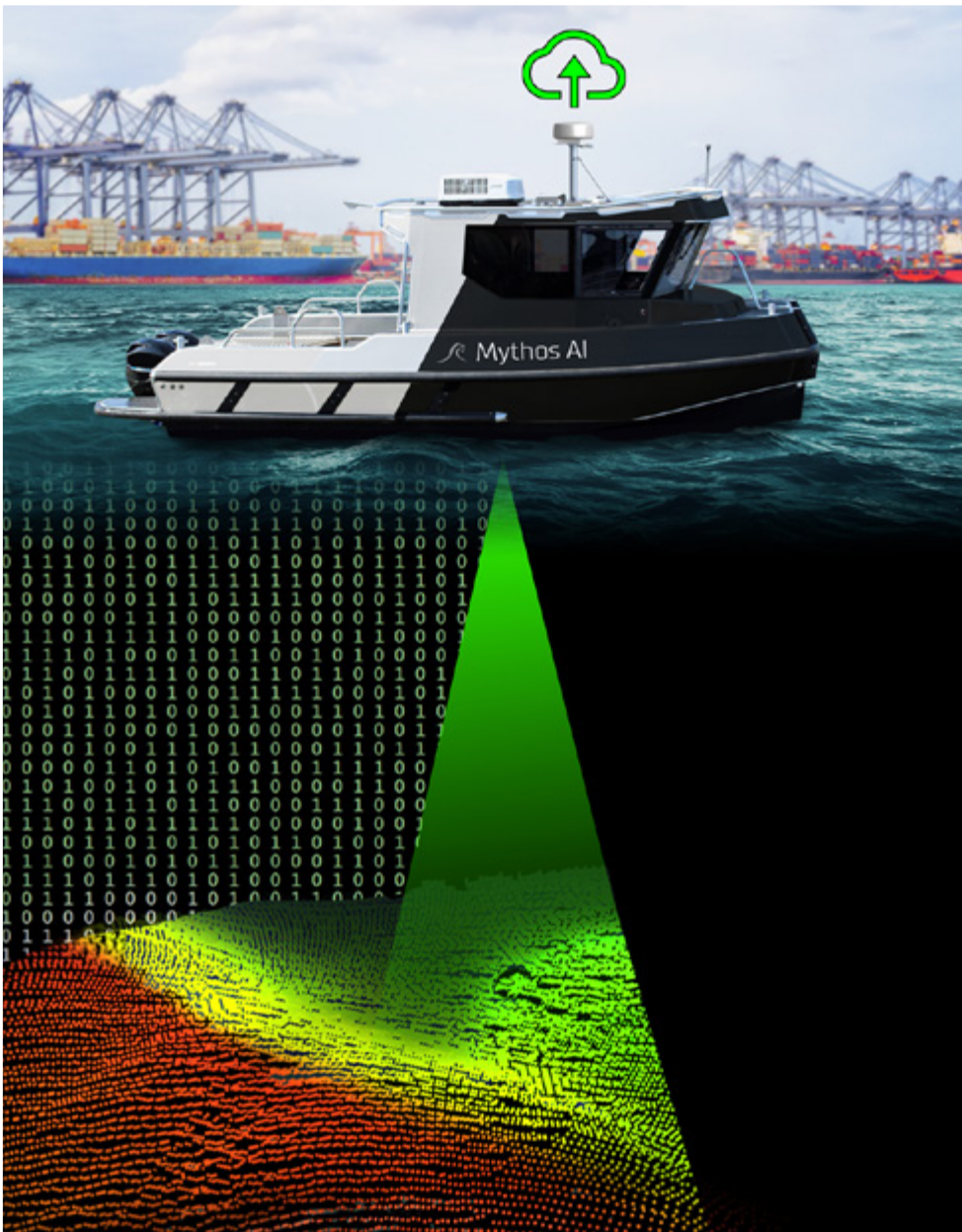


# AI Fleet

## Archimedes Series [Archie]

Hydrography made simple



# Archimedes Series

Meet the world's first autonomous survey vessel built for ports.

**[Archie]**

Depth data when you need it, where you need it.



Easy surveying means more surveying.

Customers can lease an Archie, supply their own operator, or they can have us do it.

Thanks to Archie, stakeholders are empowered with real-time depth data they would otherwise lack.

The Archimedes Fleet of autonomy aided hydrographic vessels are slated to service every busy port around the world. Imagine channel clearance data at a moment's notice.

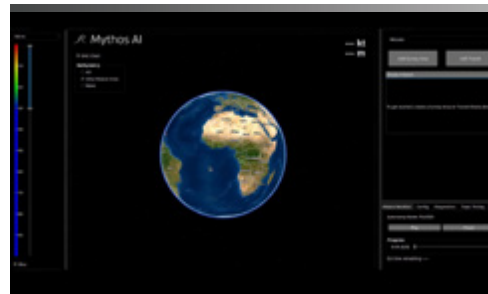


Bathymetric data is accessed through the Mythos AI interface via the cloud.

No matter where you are, up-to-date depth data is at your fingertips.

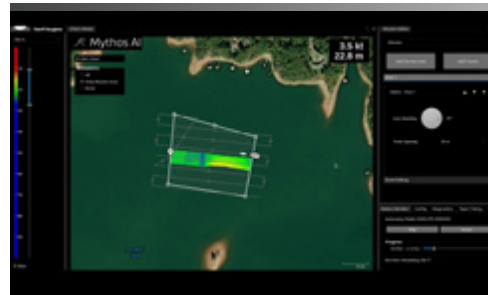
## INDUSTRY'S SIMPLEST INTERFACE

### Plan surveys across the globe



Our intuitive software enables start to finish survey planning of our most congested waterways in a matter of minutes.

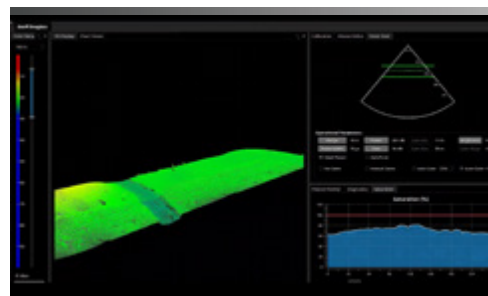
### Box an area and get data



No need to setup sonars and INSS, plan lines and boundaries, or import backgrounds & ENCs.

Archie will do that for you automatically. You select the area and Archie will fill it with high fidelity depth data.

### Premium Sensor Suite



Archie is outfitted with the industry's leading position and multibeam sonar suite.

Coupled with our autotuning and autogating, the data it collects is as high quality as current sonar technologies allow.

Rapid charting of channel depths fosters healthy ports and keeps global commerce moving.

Go/No-Go depth visualization of navigation channels and port approaches for ships.



Ever Forward aground in Chesapeake Bay



High fidelity depth data continuously gathered by the Archimedes Fleet will provide the global marine sector the situational awareness it needs.

Draft restrictions and lightering will be minimized, cargo and routing will be optimized.

More goods will be moved on fewer ships saving the industry billions in operating costs.

More importantly, creating operational efficiencies within the marine sector will drastically reduce the hundreds of millions of tons of greenhouse gas emissions produced today.

### SPECIFICATIONS

Length	26' LOA
Endurance	10 hours
Maximum speed	25 kts
Survey speed	7 kts
Required operators	1 onboard vessel operator
Teleops	standard via Mythos cloud backend
Multibeam data resolution	5cm horizontal, 10cm vertical

- Acquisition interface: Mythos single acquisition interface (RTK, tides, sound velocity, autotuning tightly integrated).
- Automated cast notifications
- Mythos AI self-driving system
- Autonomous survey area coverage
- 1 day training requirement



Mythos AI is entirely focussed on propelling the maritime sector toward an environmentally responsible, resilient and equitable reality.

We are getting it done today to preserve our marine economies for generations to come.



# Mythos AI

Hydrographic Services | Vessel Leasing | Fleet Automation

30+ combined years experience in software, autonomy, hydrography and business development



#### CONTACT

Telephone: +1 617 842 9692

E-mail: [info@mythos-ai.com](mailto:info@mythos-ai.com)

[mythos-ai.com](http://mythos-ai.com)